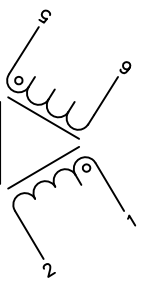


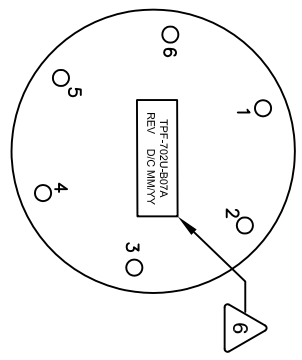
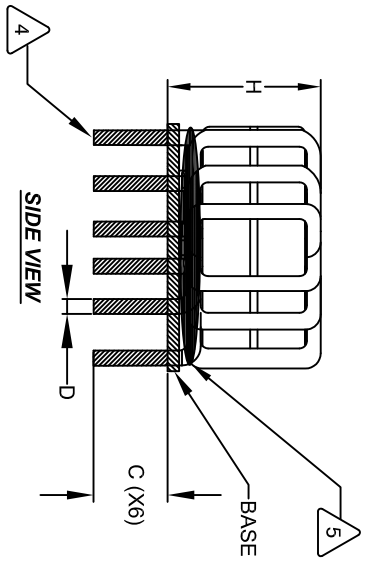
The information contained in this drawing is the sole property of Coil Winding Specialist Inc. (CWSI). Any reproduction in part or whole without written permission of CWSI is prohibited.



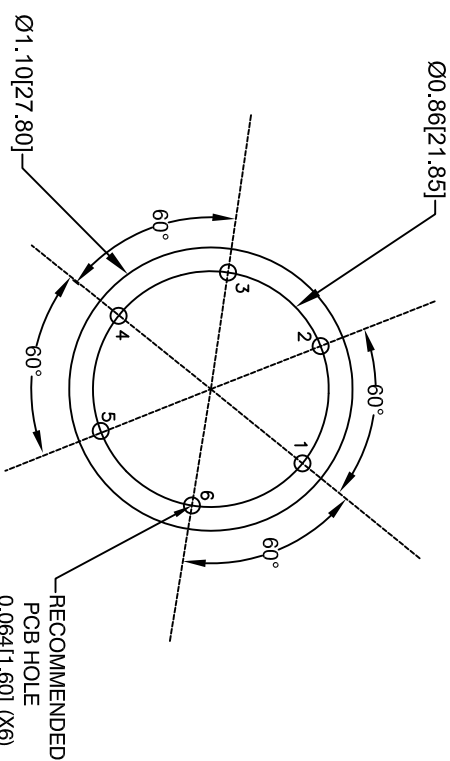
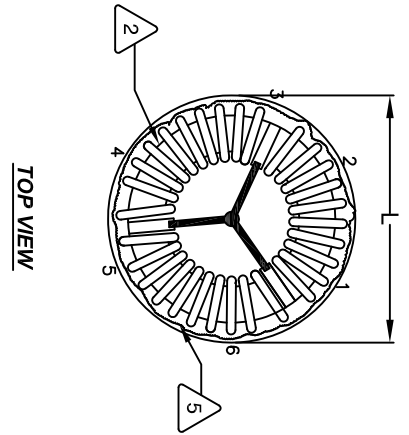
SCHEMATIC

- 7 BUILT TO ROHS COMPLIANCE AND LEAD FREE
- AT THE BOTTOM OF THE BASE AS SHOWN.
- 6 LABEL PART NUMBER, REVISION AND DATE CODE
- 5 APPLY SILICONE BETWEEN COIL AND BASE
- 4 TIN LEADS (NO INSULATION IS ALLOWED BELOW THE BASE LEVEL)

DIMENSIONAL TOLERANCE INCHES [MM]				
L(OD) Max	H(HGT) Max	C(LEAD) Min	D(LEAD) TYP	
1.10 [27.80]	0.75 [19.05]	0.50 [12.70]	0.04 [1.02]	



REVISION HISTORY				SIGN & DATE		
REV	ECN	DESCRIPTION	BY	DATE	CHK	DATE
A		PRODUCTION RELEASE	TN	01/22/2020	JL	01/22/2020
A1		UPDATED SPEC.	TN	06/07/21	JL	06/07/21



MOUNTING HOLES PATTERN (TOP VIEW)

- 3 SPECIFICATIONS AT 25°C:
WIRE: UL RECOGNIZED 200°C RATED MAGNET WIRE
CWS BYTEMARK OR OTHER APPROVED PART
CORE: NANOCRYSTALLINE OR AMORPHOUS CORE
- 2 CASE RATING CLASS B (130°C) REQUIRED
MATERIAL: UL RECOGNIZED FOR FLAMMABILITY

1 ANY TOLERANCE. THIS DIM. CAN VARY A LITTLE FROM PART TO PART.
TYP IN DIM. TOL. TABLE REFERS TO A NON-CRITICAL TYPICAL (AVERAGE) DIM. WITHOUT

NOTES: UNLESS OTHERWISE SPECIFIED, READ NOTES FROM BOTTOM TO TOP.
CAGE CODE: 5DME2

UNLESS OTHERWISE SPECIFIED		AUTOCAD	
DIMENSIONING AND TOLERANCE PER ANSI Y14.5M AND [DIMETERS]	TOLERANCE INCHES: X.XX=±.005 X.X=±.003 X.XX=±.127 X.X=±.38	SIGN	X
ANGLE PROJECTION	45°/45°	SOLIDWORKS	
DO NOT SCALE DRAWING		DATE	
		DRWN	TN
		DATE	01/22/2020
		CHKD	JM
		DATE	01/22/2020
		ENGR.	JL
		DATE	01/22/2020
		APPR.	JL
		DATE	01/22/2020
		SIZE	B
		TPF-702U-B07A	
		REV	A1